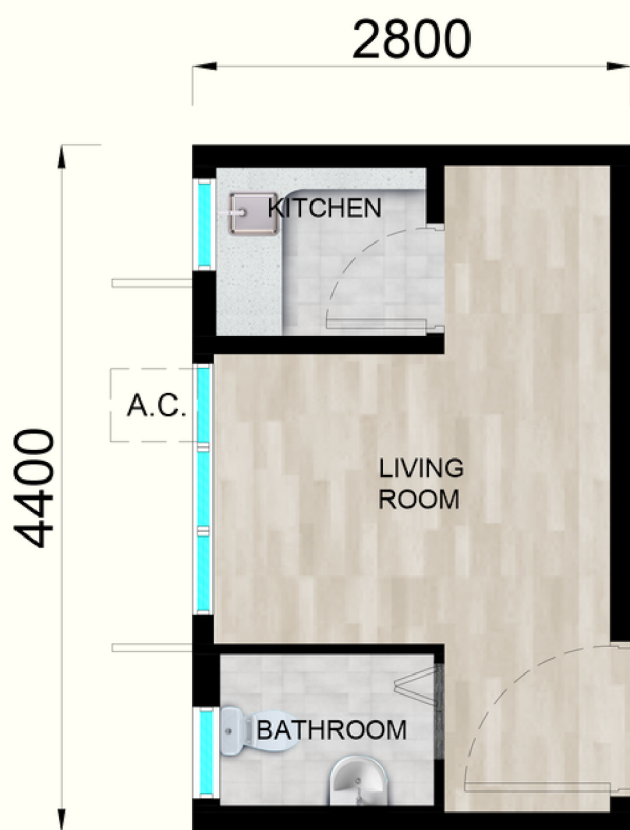


### 單位平面圖

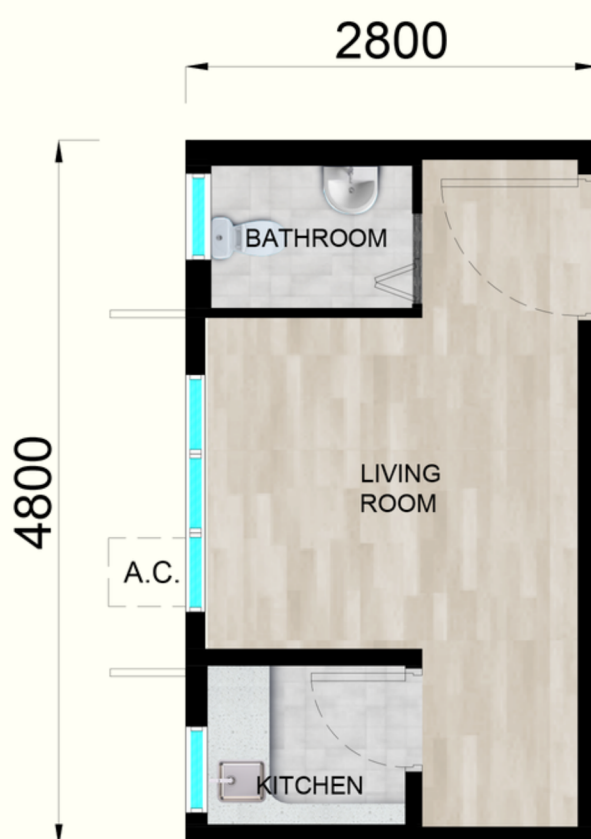
### Floor Plan



### 1人單位

數量: 180個

面積: 約132呎-144呎



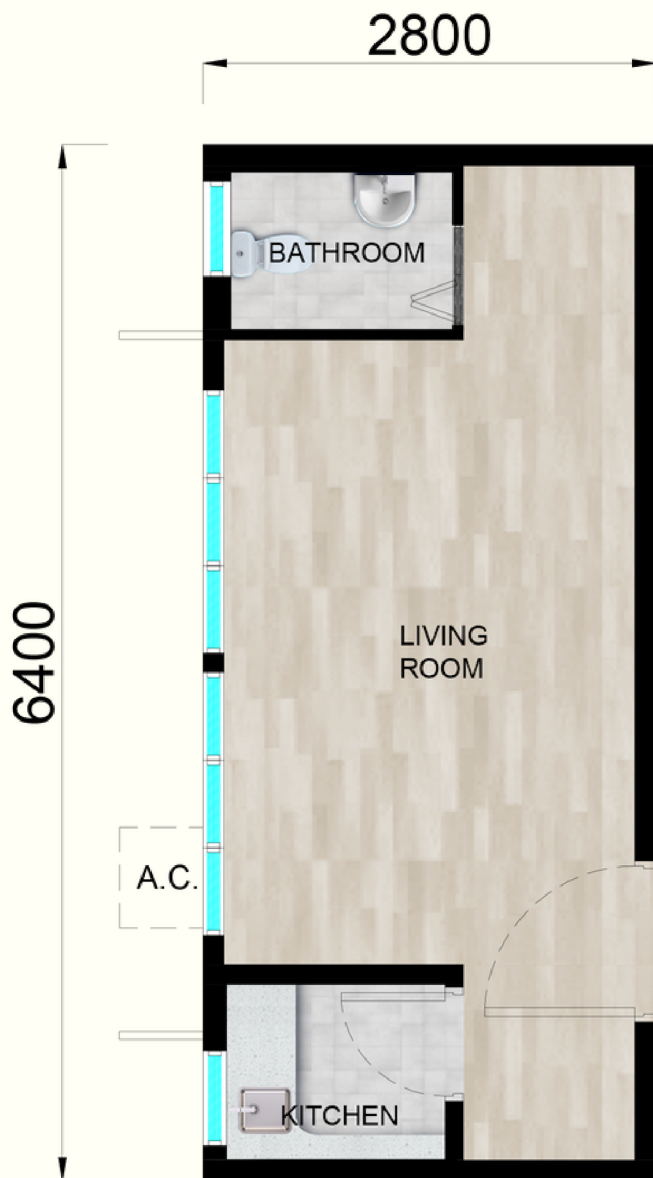
### 1-person Unit

Quantity: 180 in total

Floor Area: ~132 - 144 sq.ft

### 單位平面圖

### Floor Plan



## 2人單位

數量：80個

面積：約192呎

## 2-person Unit

Quantity: 80 in total

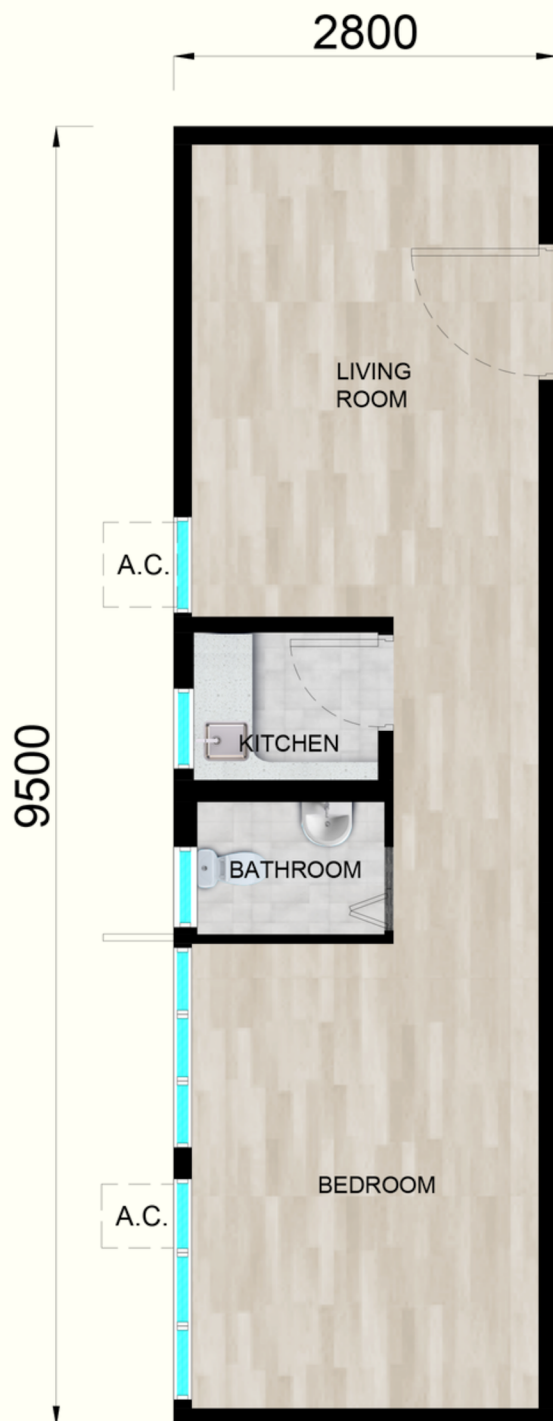
Floor Area: ~192 sq.ft

## 洪水橋過渡性房屋項目

Hung Shui Kiu Transitional Housing Project

### 單位平面圖

### Floor Plan



### 3人單位

數量：148個

面積：約286呎

### 3-person Unit

Quantity: 148 in total

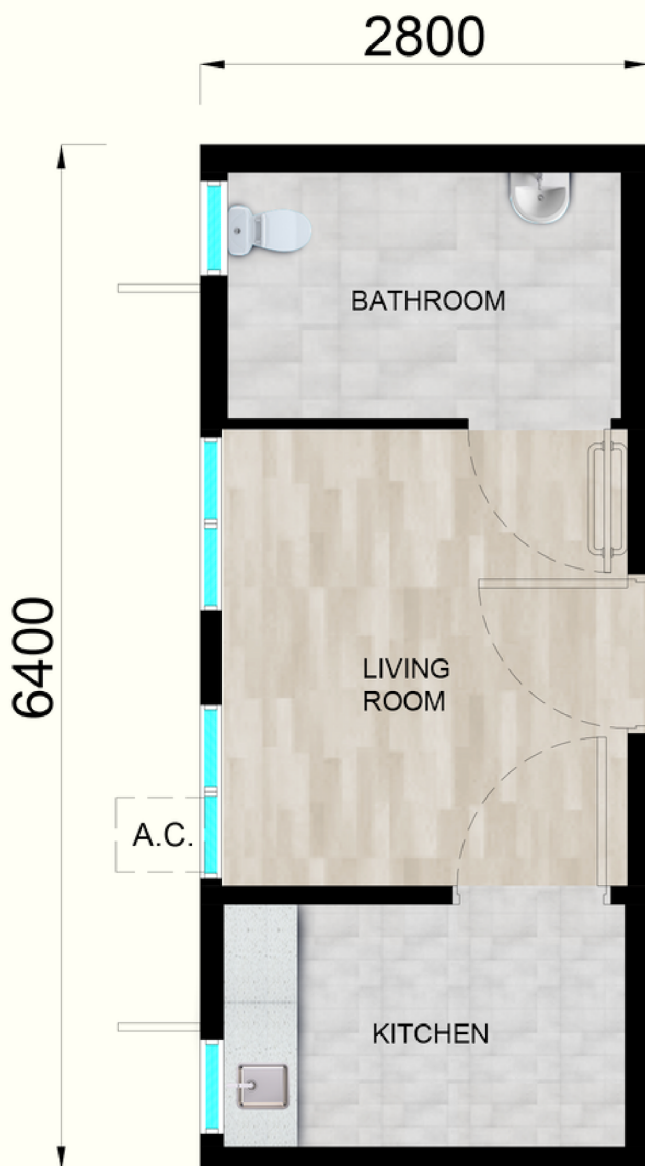
Floor Area: ~286 sq.ft

## 洪水橋過渡性房屋項目

Hung Shui Kiu Transitional Housing Project

### 單位平面圖

### Floor Plan



### 無障礙單位\*

數量：2個

面積：約192呎

### Accessible Unit\*

Quantity: 2 in total

Floor Area: ~192 sq.ft

\* 無障礙單位最多入住人數為2人，當中最少一名屬由醫生證明非短暫性室內倚靠輪椅活動的殘疾人士。入住許可費水平會視乎入住人數釐定。

\* An accessible unit can accommodate one to two persons. One of the applicants (the applicant or his/her family member) must be a permanent wheelchair-bound person. Documentary proofs with medical certificate shall be provided at the vetting interview. The amount of monthly rent is charged according to tenant's household size.

(圖片只供參考)

(Diagrams are for reference only)